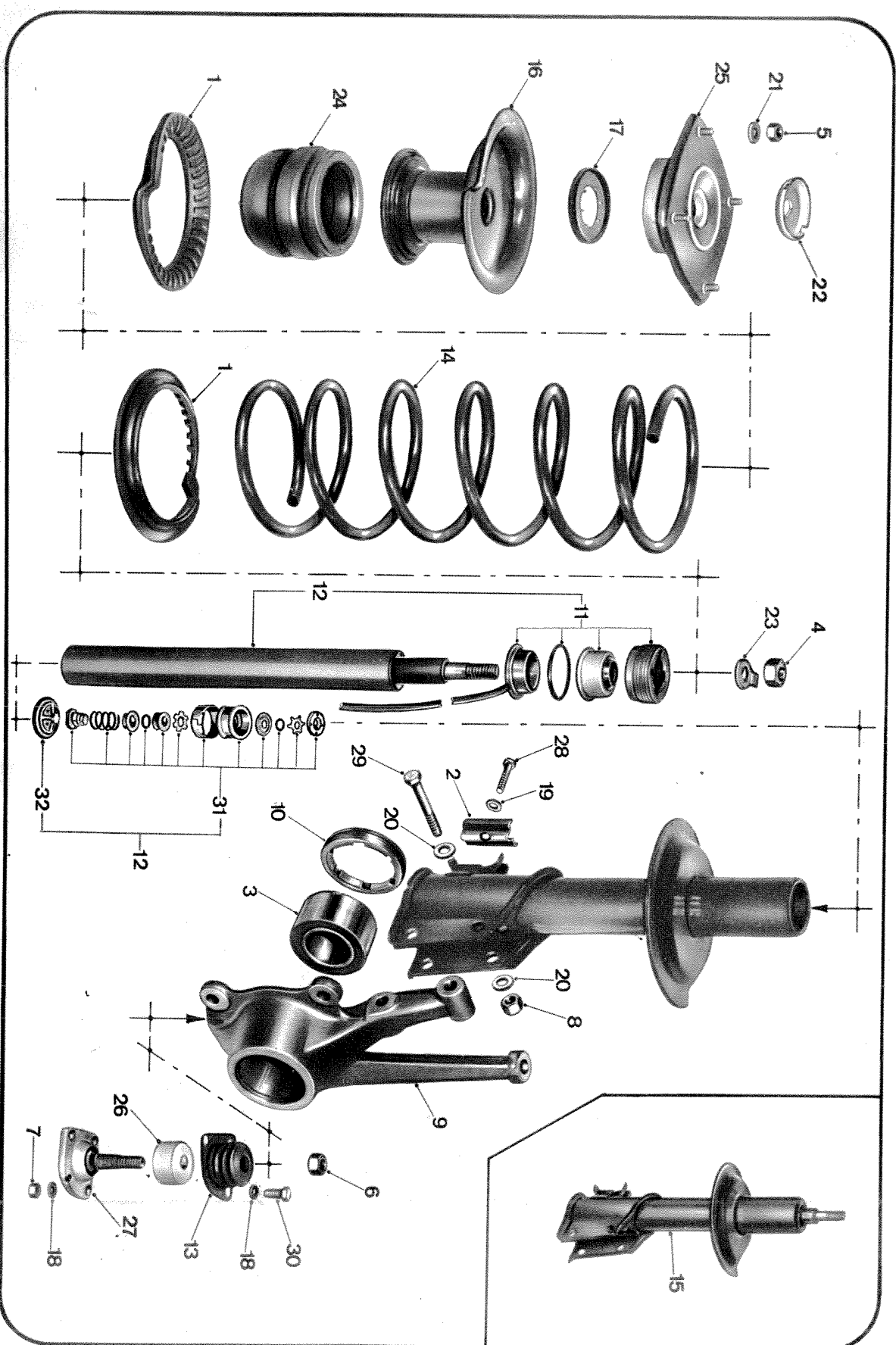


STERZO-SOSPENSIONI-RUOTE - DIRECTION-SUSPENSIONS-ROUES - STEERING-SUSPENSIONS-WHEELS - LENKUNG UND FAHRWERK  
 FUSI A SNODO - MOLLE E MONTANTI TELESCOPICI SOSPENSIONE ANTERIORE - FUSEES - RESSORTS ET JAMBES ELASTIQUES SUSPENSION AR -  
 FRONT STRUT SUSPENSION - SWIVELS - ACHSCHENKEL - FEDERN UND FEDERBEINE DER VORDERADAUFHÄNGUNG



Tav. 48

Tav. 48

STERZO-SOSPENSIONI-RUOTE - DIRECTION-SUSPENSIONS-ROUES - STEERING-SUSPENSIONS-WHEELS - LENKUNG UND FAHRWERK  
FUSI A SNODO - MOLLE E MONTANTI TELESCOPICI SOSPENSIONE ANTERIORE - FUSEES - RESSORTS ET JAMBES ELASTIQUES SUSPENSION AR -  
FRONT STRUT SUSPENSION - SWIVELS - ACHSCHENKEL - FEDERN UND FEDERBEINE DER VORDERADAUFHÄNGUNG

N.	N. Ord.	Origine od. tubic	Q.	C.S.	Appl.	DENOMINAZIONE	DESIGNATION	DESCRIPTION	BENENNUNG	per tipo - P. types for types - für Bm.
1	82286671		4			Anello isol.per molla sospen- Bague isolante		Pad	Isolierling	
						sione anteriore				
2	82291391		2			Coperchio staffa attacco fles_ Couvercle		Cap	Deckel	
						sibile freni ant.al montante				
3	82287156 - 2289841		2			Cuscinetto mozzo ruote		Bearing	Lager	
4	12164011		2			Dado fiss.montante telesc.al		Nut	Mutter	
						tassello				
5	16100811		8			Dado fiss.tassello elastico		Eccou	Mutter	
						montante telescopico				
6	82306954		2			Tassello el.att.mont.telesc.		Pad	Stützlager	
7	10903011		2			Vite fiss.fless.freni anter.		Bolt	Schraube	
8	83415373		4			Dado montante telescopico		Nut	Mutter	
9	82305994		1			Fuso a snodo D.		Fusée D	Swivel, right	Achsschenkel, re.
	82315840		1			Fuso a snodo D.		Fusée D	Swivel, right	Achsschenkel, re.
	82305995		1			Fuso a snodo S.		Fusée G	Swivel, left	Achsschenkel, li.
	82315841		1			Fuso a snodo S.		Fusée G	Swivel, left	Achsschenkel, li.
10	82286488		2			Ghiera bloccaggio anello est.		Bague blocage	Ring nut	Nutring
						cuscinetto				
11	82301181		2			Gruppo guarniz.con ghiera,		Jeu de joints avec	Set, seals, ring	Dichtungssatz m.
						bocchett.e tubetto		bague, douille et	nut, sleeve & tube	Nutring, Büchse u.Rohr
	9925316		2			F Idem		d°	Do.	Do.
	82344666		2			F Idem		d°	Do.	Do.
12	82301182		2			Gruppo interno montante tele-		Pieces intérieures	Part set, strut	Satz, Federbein-
						scopico anteriore		jambe élastique	inner front	Innenenteil, vo.
	82327416		2			Idem		d°	Do.	Do.
	82327419		2			E Idem		d°	Do.	Do.
	82344685		2			F Idem		d°	Do.	Do.
13	4182153		4			Vite fiss.montante telescop.		Vis	Bolt	Schraube
	82325854		4			Vite fiss.montante telescop.		Vis	Bolt	Schraube

+ (Modif., And. 7/1977)

STERZO-SOSPENSIONI-ROTE - DIRECTION-SUSPENSIONS-ROUES - STEERING-SUSPENSIONS-WHEELS - LENKUNG UND FAHRWERK  
FUSI A SNODO - MOLLE E MONTANTI TELESCOPICI SOSPENSIONE ANTERIORE - FUSEES - RESSORTS ET JAMBES ELASTIQUES SUSPENSION AR -

Tav. 48

FRONT STRUT SUSPENSION - SWIVELS - ACHSCHENKEL - FEDERN UND FEDERBEINE DER VORDERADAUFRÄNGUNG

Tav. 48

N.	N. Ord.	Origine adibic	O.	CS.	Appl.	DENOMINAZIONE	DESIGNATION	DESCRIPTION	BENENNUNG	per tipi - p. types for types - für Bm.
14	82286666	2	2			Molla sospensione anteriore	Reessort	Coil spring	Schraubenfeder	Berline
	82306799	2	2			Molla sospensione anteriore	Reessort	Coil spring	Schraubenfeder	Coupé-Spider-HPE
	82318269	2	2		C	Molla sospensione anteriore	Reessort	Coil spring	Schraubenfeder	Coupé-Spider-HPE
	82329272	2	2		C	Molla sospensione anteriore	Reessort	Coil spring	Schraubenfeder	Berline
15	82327791	2	2			Montante telescopico (WA)	Jambe élastique	Strut assy.	Federbein	Coupé-Spider-HPE
	82341684	2	2			Montante telescopico (WA)	Jambe élastique	Strut assy.	Federbein	Coupé-Spider-HPE
	82301005	2	2			Idem completo (WA)	Jambe élastique	Strut assy.	Federbein	Berline 1300 BB.3
	82315777	2	2			Montante telescop. compl. (WA)	Jambe élastique	Strut assy.	Federbein	Berline
	82341690	2	2			Montante telescop. compl. (WA)	Jambe élastique	Strut assy.	Federbein	Berline
16	82315775	2	2			Piatello sup. appoggio molla	Culot	Thrust plate	Federeller	Berline
	82330979	2	2		C	Piatello sup. appoggio molla	Culot	Thrust plate	Federeller	Berline
	82327265	2	2		D	Piatello sup. appoggio molla	Culot	Thrust plate	Federeller	Coupé-Spider-HPE
	82315775	2	2		C	Piatello sup. appoggio molla	Culot	Thrust plate	Federeller	Coupé-Spider-HPE
17	82303013	2	2			Ralla reggispianta	Butée	Thrust plate	Druckscheibe	
18	82320334	2	2		A	Valvola rimbalzo (WA)	Soupape d'amortis-	Buffer valve	Dämpfungsventil	Berline 1300 BB.3
							seur			
	82327417	2	2		A	Valvola rimbalzo (WA)	d°	Do.	Do.	Berline
	82327420	2	2		A	Valvola rimbalzo (WA)	d°	Do.	Do.	Coupé-Spider-HPE
19	10519401	2	2			Rosetta fiss. fless. ant. freni	Rondelle	Washer	Scheibe	
20	10520001	8	8			Rosetta fiss. montante telesc.	Rondelle	Washer	Scheibe	
21	12601371	8	8			Rosetta fissaggio tassello	Rondelle élastique	Washer	Federscheibe	
22	82300121	2	2			Scodellino attacco sup. mont.	Cuvette	Cup	Teller	
23	82326379	2	2			Lamierino fiss. sup. montante	Frein	Lock plate	Sicherungsblech	
24	82318519	2	2			Tampone elast. molla sosp. ant.	Tampon	Bumper	Puffer	
25	82331771	2	2			Gruppo completo valvola di compressore	Ensemble clapet de compression	Valve assy., rebound pressure control	Druckventilgruppe kpl.	Coupé-Spider-HPE
	82331772	2	2			Idem	d°	Do.	Do.	Berline
-	82341522	4	4			Distanziale p. fondo corsa montante	Entretoise	Spacer	Distanzstück	Coupé-Spider-HPE